

Instructions

What you need:

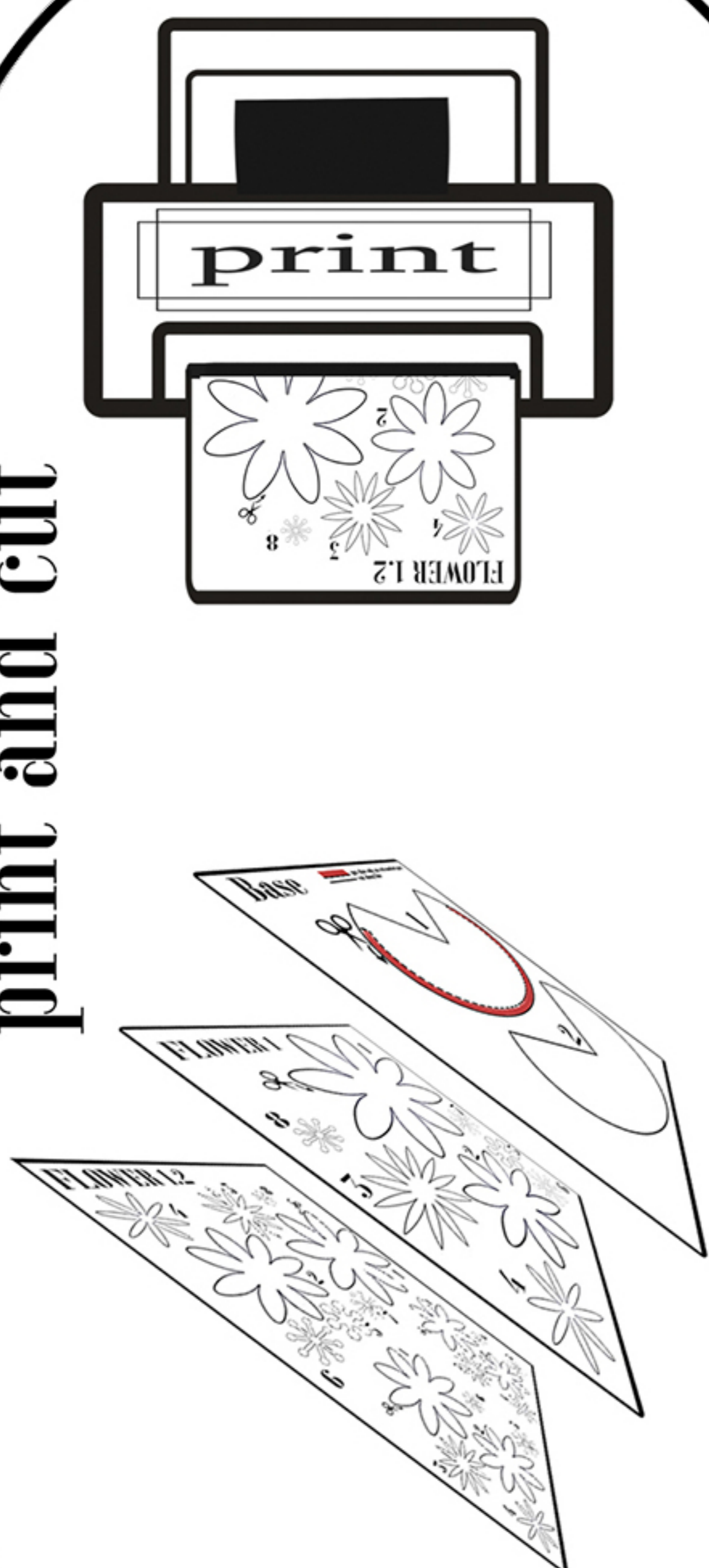
- ✿ paper of your choice [recommended: thicker paper, at least 160g – in case that you don't have thicker paper you can glue a few together]
- ✿ scissors
- ✿ glue
- ✿ printer

optional: colors of your choice, if you want to paint them

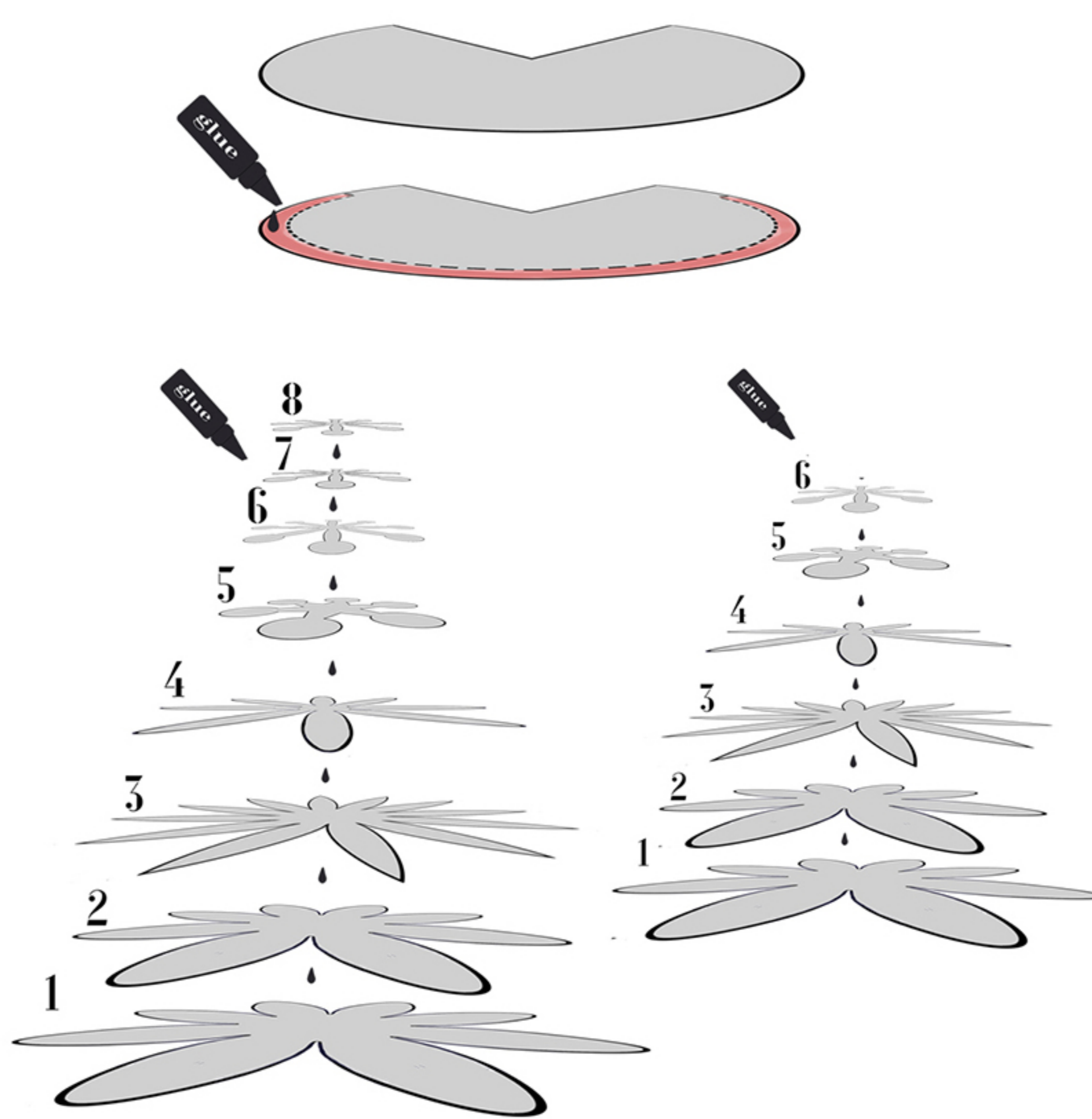
What to do:

- print out the flower templates, the base template and the card template on your paper of choice [it can be white paper or colored paper]
- optional: color the flower and the leave
- cut the pieces out [take your time with the smaller pieces]
- glue the flower pieces together with nr 1 at the bottom [see image]
- glue the base together as shown [only put glue on the edges where it is marked]
- glue the flowers on top of the leave
- write your message on the card
- put the card in
- give it to your loved ones and see them smile

print and cut



glue the pieces together as shown and numbered



glue flowers to base and insert the card

